



## Summary of Monthly Operations – December 2012

### General

In total, the 95 Express Lanes:

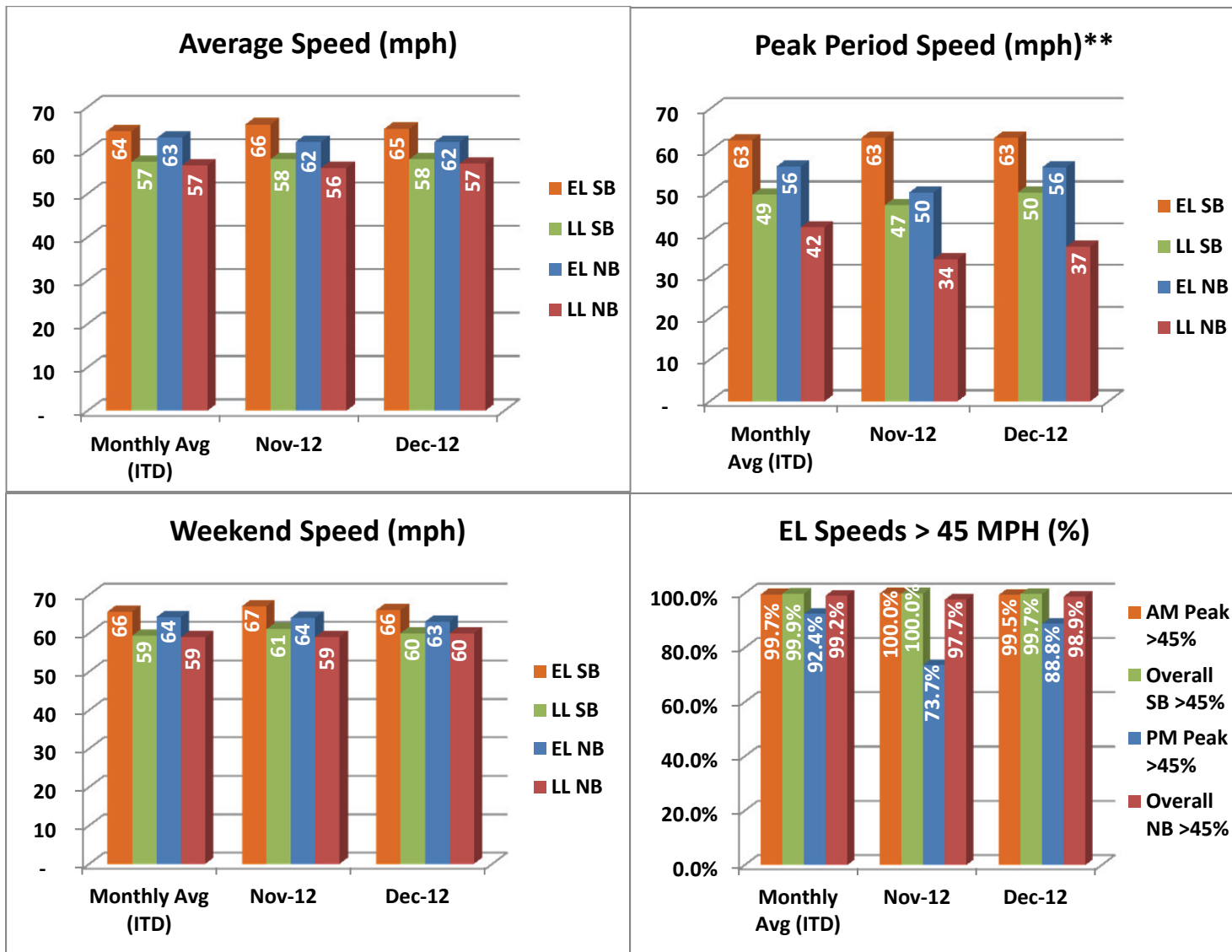
- ✓ Serviced 1,748,904 vehicle trips in December 2012 (21.0 million trips in 2012), bringing the total since opening (December 5, 2008) to approximately 66.1 million trips.
- ✓ Had estimated monthly toll revenue of \$1.43 million in December 2012 (\$17.0 million in 2012), bringing the total revenue to date to approximately \$51.6 million.
- ✓ Decreased to a total of 8,913 registered vehicles, resulting in 32,181 toll exempt trips.

<u>December 2012 Statistics</u>	<u>Southbound</u>		<u>Northbound</u>			
<b>Total Trips</b>	897,526		851,378			
<b>Exempt Trips</b>	16,516		15,665			
<b>Revenue</b>						
	\$669,411		\$764,634			
<b>Tolls</b>						
- Range	\$0.00 - \$7.00		\$0.00 - \$7.00			
- Avg. Weekday	\$1.05		\$1.32			
- Avg. Peak Period**	\$1.80		\$3.15			
- Avg. Weekend	\$0.32		\$0.26			
- Avg. Off Peak	\$0.79		\$0.66			
- 85 <sup>th</sup> Percentile Weekday	\$2.25		\$3.00			
<b>Volume (veh)</b>						
	<b>EL</b>	<b>LL</b>	<b>EL</b>	<b>LL</b>		
- Avg. Weekday	32,237	105,198	30,449	98,658		
- Avg. Peak Period**	8,225	17,716	8,022	17,442		
<b>Speed (mph)</b>						
	<b>EL</b>	<b>LL</b>	<b>Δ</b>	<b>EL</b>	<b>LL</b>	<b>Δ</b>
- Avg. Overall	65	58	7	62	57	5
- Avg. Peak Period**	63	50	13	56	37	19
<b>Operated Above 45 MPH</b>						
	99.7%		98.9%			
<b>Remained Open to Motorists</b>						
	95.7%		96.1%			
<b>Closed due to Planned Construction</b>						
	2.0%		1.4%			
<b>Closed due to Non-recurring Events</b>						
	2.2%		2.5%			
<i>EL (Express Lanes); LL (Local Lanes)</i>						
<i>**Peak Period is defined as 6-9 AM (southbound) and 4-7 PM (northbound).</i>						



## Operations/Traffic Statistics - Speed Data

\*\* Peak Period is defined as 6-9 AM (southbound) and 4-7 PM (northbound).

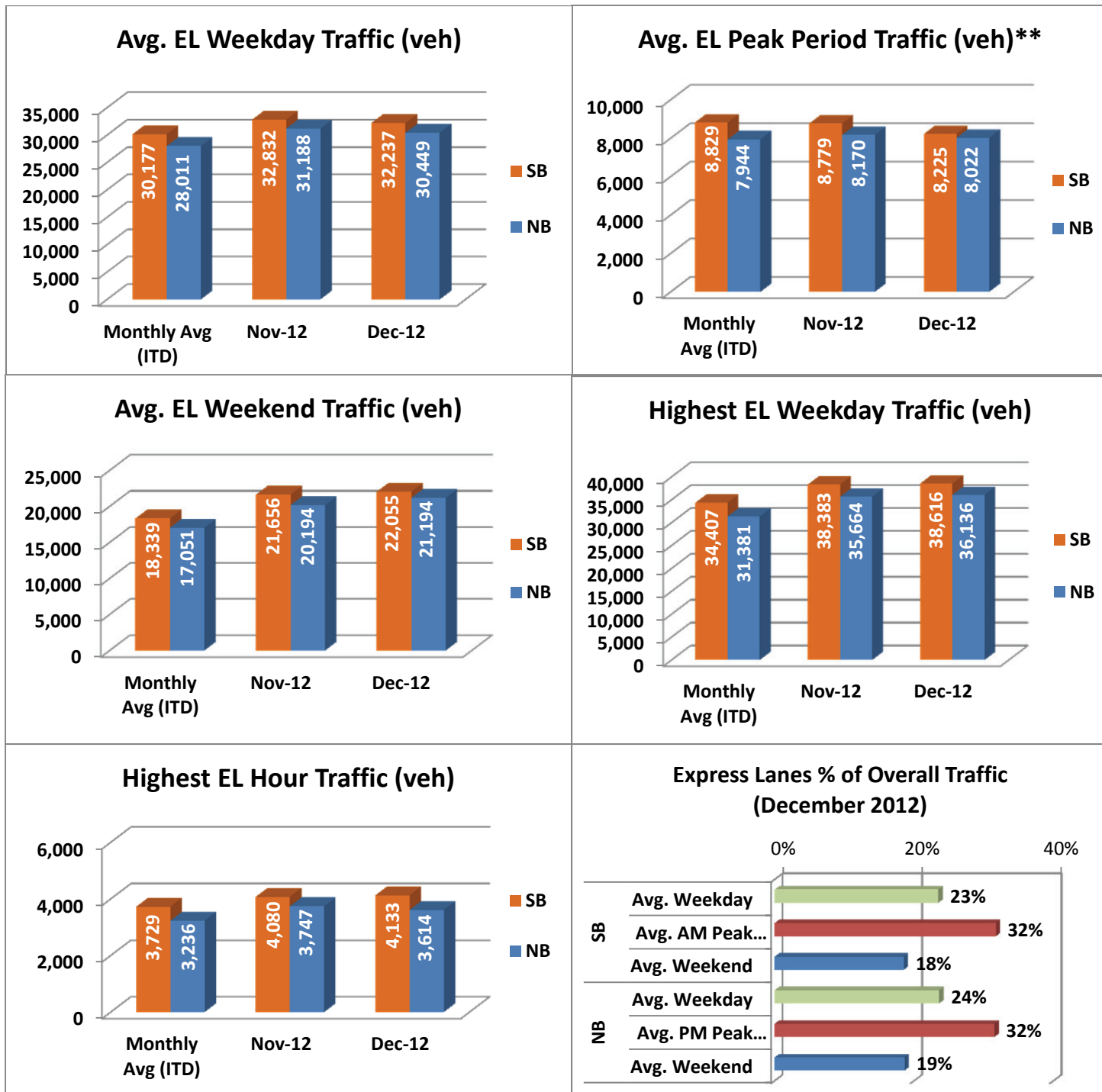


NOTE: ITD = Inception to Date



## Operations/Traffic Statistics - Volume Data

\*\* Peak Period is defined as 6-9 AM (southbound) and 4-7 PM (northbound).

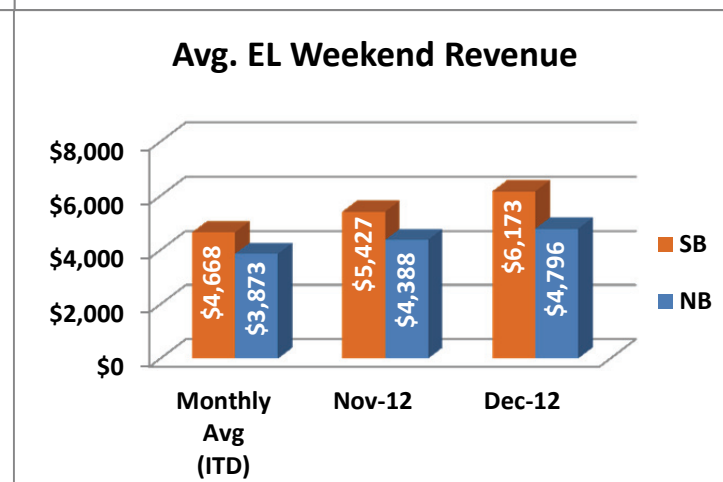
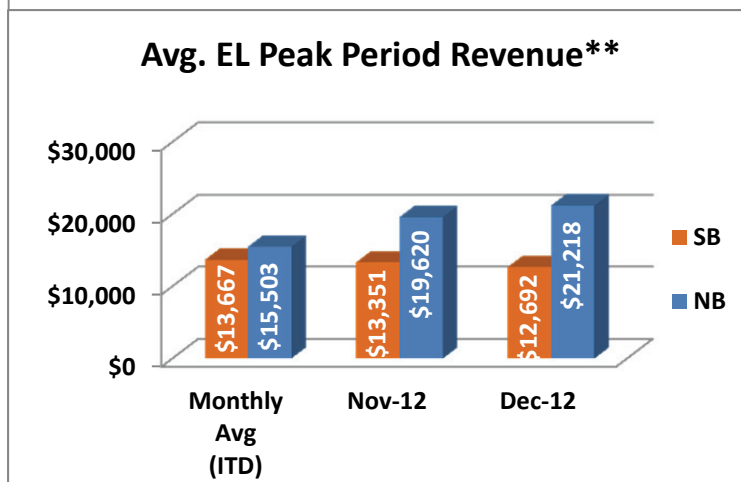
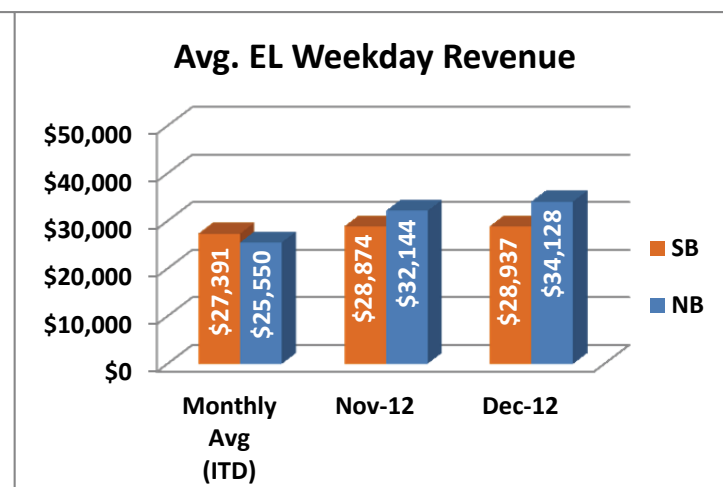
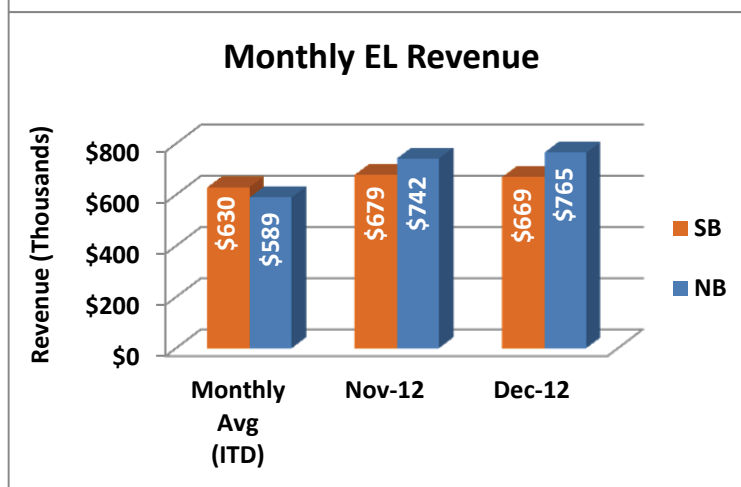
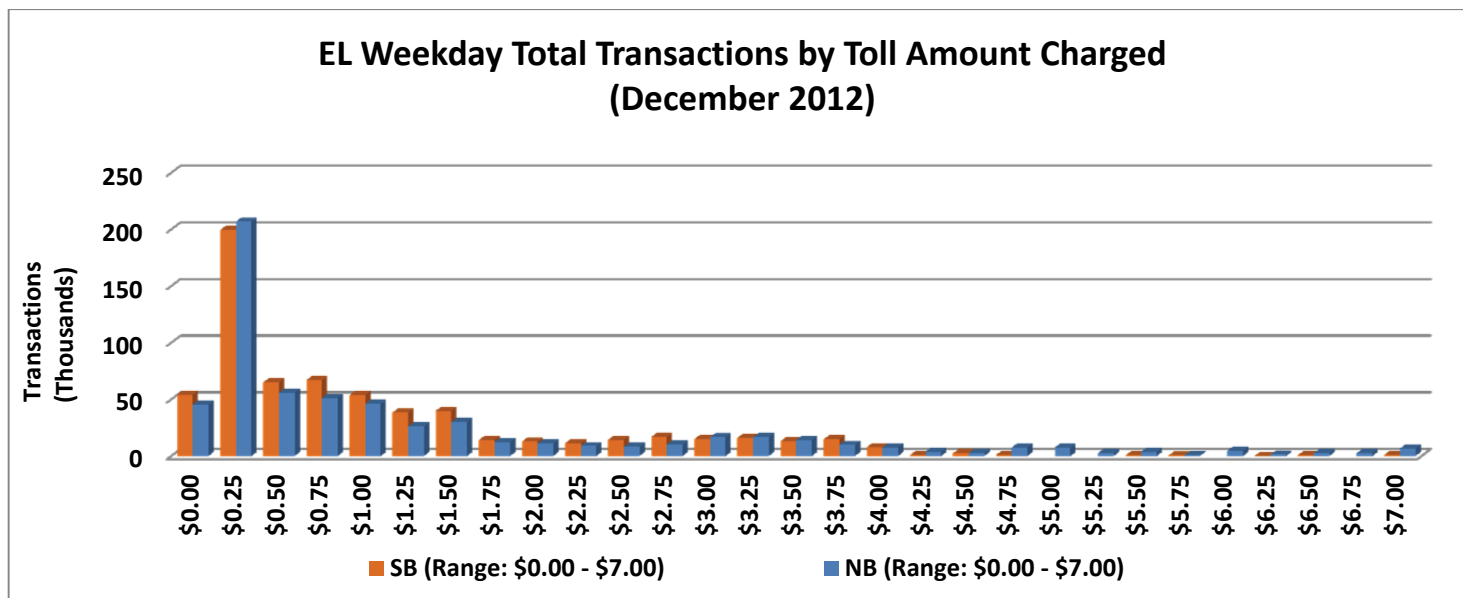


NOTE: ITD = Inception to Date



## Revenue/Tolls Statistics

\*\* Peak Period is defined as 6-9 AM (southbound) and 4-7 PM (northbound).

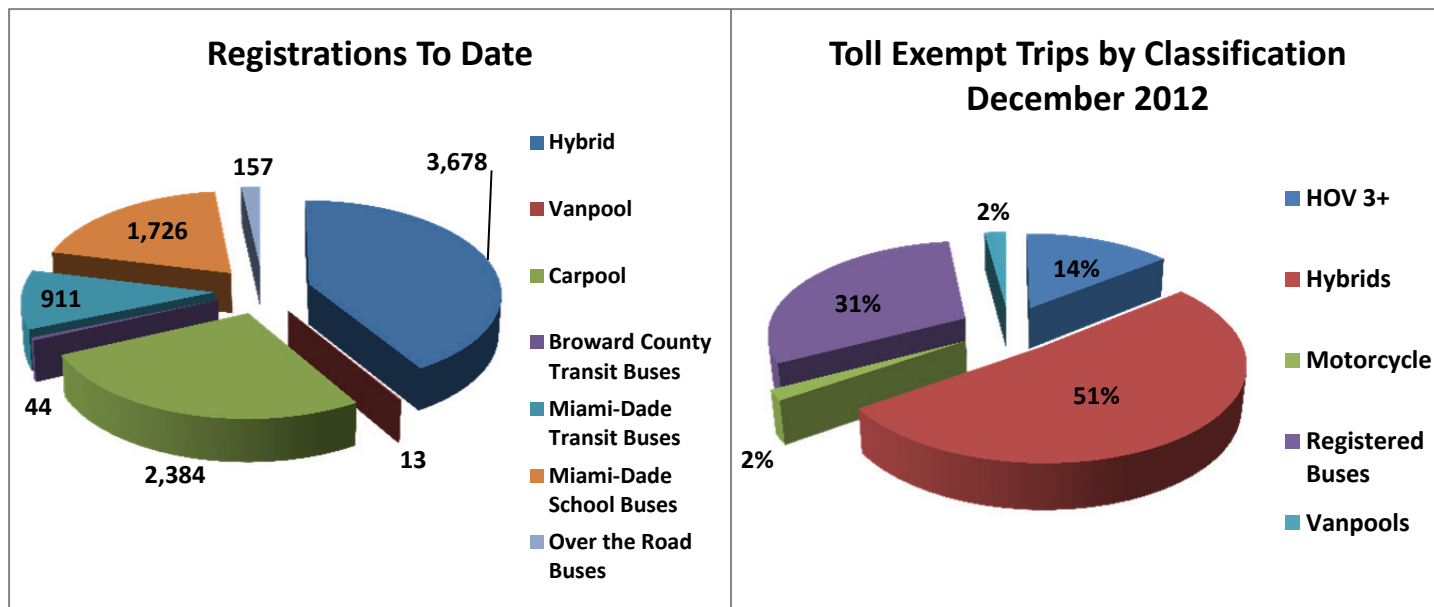


NOTE: ITD = Inception to Date

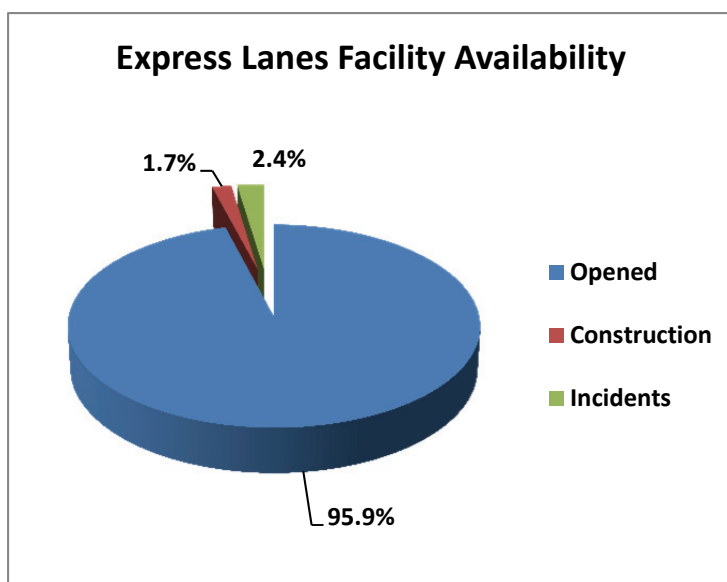


## Registrations—Toll Exempt Trips

The total registrations through December 2012 decreased to 8,913. The 32,181 Toll Exempt Trips for this month are shown by classification below.



## Facility Availability



The entire 95 Express lanes (both directions) were open to motorists 95.9% of the time, while closed 1.7% due to 5 planned construction/maintenance events (each lasting just over 5 hours in duration, on average) and 2.4% due to 142 non-recurring events (each lasting approximately 15 minutes in duration, on average).